

Realcomm

Summer Marketplace Buyer's Guide

Explore hundreds of products & services from leading industry solution providers at realcomm.com/marketplace

Enterprise Building Technology – 3

Real Estate Services & Solutions – 10

Smart Buildings & Operations – 18

Workplace Strategy & Design – 28



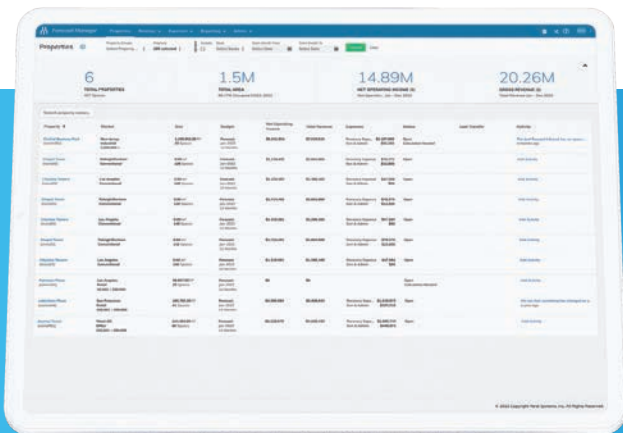
Yardi® Elevate



Drive better decisions with
connected asset management

IMPROVE OPERATIONS, GAIN VISIBILITY, REDUCE COSTS

- **Improve** property maintenance and tenant satisfaction
- **Streamline** budgeting and ensure forecast accuracy
- **Ensure** construction projects are completed on time and on budget
- **Simplify** property valuations and visualize asset performance



MAXIMIZE REVENUE & INSIGHT ACROSS THE ASSET LIFECYCLE

Leverage powerful built-in automation and a single source of reliable real-time data. Greater insight, streamlined workflows and more accurate forecasting will give your team confidence to make better decisions.



(800) 866-1144
Learn with us at yardielevate.com

Get
the
details



ENTERPRISE BUILDING TECHNOLOGY



CBRE

Project Management

Nick Holzworth, Managing Director | Portfolio Technology

nick.holzworth@cbre.com

415.265.2736

<https://www.cbre.com/>

CBRE's Portfolio Technology group helps our clients select, implement & support the right suite of technologies to support their evolving workplaces & portfolios.



CohnReznick

Enterprise Data | Analytics | AI | ML

Paul Ricci, Partner, Enterprise Applications Leader

paul.ricci@cohnreznick.com

732-266-6433

<https://www.cohnreznick.com/>

CohnReznick helps organizations optimize performance, manage risk, and maximize value through associated firms operating under the CohnReznick brand.



REAL ESTATE SOFTWARE

MRI Software, LLC

ERP

Nicholas Frank, Senior Marketing Director

nicholas.frank@mrsoftware.com

216.825.6706

<http://www.mrsoftware.com>

MRI Software is a leading provider of real estate software solutions that transform the way communities live, work and play.

ENTERPRISE BUILDING TECHNOLOGY



QUANTRA
TECH

Quantra Technology Solutions
Investment Management and Reporting
Payables | Receivables
Property Accounting | Management

Ganesh Kanagaraj | Founder and CEO |

ganesh@quantratech.com

3473950369

<https://quantratech.com/>

Quantra integrates tech and financial data to boost business success, streamlining IT and data management to save time, cut costs, and enhance competitiveness.



RealFoundations
Process Automation
Property Accounting | Management

Savannah Goldenberg, Presence Manager

savannah.baron@realfoundations.net

9492514145

<http://www.realfoundations.net>

RealFoundations is a global professional services firm focused on helping real estate companies in all market sectors make smarter, more profitable decisions.



Yardi
ERP

Brian Sutherland, Industry Principal

brian.sutherland@yardi.com

800.866.1144 x. 1883

<http://www.yardi.com>

Yardi® develops and supports industry-leading investment and property management software for all types and sizes of real estate companies. Visit yardi.com.

ENTERPRISE BUILDING TECHNOLOGY



5Q
Cybersecurity (IT)

Don Goldstein, President and CISO

don.goldstein@5qcyber.com

470.299.9542

<https://www.5qpartners.com>

5Q provides the full spectrum of technology solutions. We supply enterprise-level support that maximizes network security, connectivity and efficiency.



Alpha Alternatives (formerly Lionpoint Group)

Enterprise Architecture

Enterprise Data | Analytics | AI | ML

Investment Management and Reporting

Julie Miner, Senior Partner

jminer@lionpointgroup.com

<https://alternatives.alphafmc.com/>

Alpha Alternatives is a global advisory firm with a unique focus on the alternative investments industry.



Altus Group

Altus Group

Investment Management and Reporting

Aviva Fink, Vice President, Global Marketing

contact-us@altusgroup.com

713-621-4343

<https://www.altusgroup.com/>

Leading-edge technology, advanced analytics and deep industry expertise: the on-demand asset, portfolio and fund intelligence you require to maximize outcomes.



Apex Tigre

Process Automation

Property Accounting | Management

Rohan Bulchandani, Founder

marketing@retransform.com

214.358.4330

<https://www.apexgroup.com/technology-platforms/apex-tigre/>

Apex Tigre delivers proptech solutions, digital platforms, and managed services tailored to commercial, retail, residential, and corporate real estate.



Bottomline

Payables | Receivables

Jennifer Shaw, Director of Marketing

jshaw@nexussystems.com

703-524-1301

<https://www.bottomline.com/us>

Bottomline helps businesses transform the way they pay and get paid.



Cherre

Enterprise Data | Analytics | AI | ML

Kira Swain, VP of Marketing

kira@cherre.com

1234567890

<https://cherre.com/>

Cherre's award-winning real estate data platform empowers customers to make better investment and underwriting decisions with a single source of truth.

ENTERPRISE BUILDING TECHNOLOGY



DealSumm Debt | Treasury

Assaf Morag, Founder

650-544-7320

assaf.morag@dealsumm.com

<https://www.dealsumm.com/>

DealSumm is a technology company that empowers its customers to automatically, rapidly & reliably extract the terms, conditions & fine print hidden in contracts.



Domain 6 ERP

John Mess, Director of Business Development

John.mess@domain6inc.com

+1 612 323 4242

<http://www.domain6inc.com>

Domain 6 Inc. revolutionizes the real estate industry tech by harnessing robust capabilities of the Microsoft Power Platform & Dynamics 365 and its AI Copilots.



Group9 Communications Cloud Services

Paulina Roberts, VP of Business Development

proberts@group9com.com

6784038863

<https://www.group9com.com/>

We help companies find the right technology solutions to meet their business objectives while providing significant savings and support.



KODE Labs Cloud Services Enterprise Data | Analytics | AI | ML

Ben Dwyer, SVP of Global Sales

bendwyer@kodelabs.com

<https://kodelabs.com/>

KODE Labs transforms the built environment through KODE OS, an open enterprise platform that seamlessly integrates building management, IoT, and operational systems.



LoanBoss Debt | Treasury

Dan Roehl, Chief Revenue Officer

daniel.roehl@loanboss.com

2162725898

<http://www.loanboss.com>

Debt Management Platform: -Loan Abstracts -Live Interest Rates -PMS Integration -Covenant Calculations and Projections -Lender Compliance -Term Sheet Analysis



NTrust Infotech Document Management

Rick Platzek, CMO

rplatzek@ntrustinfotech.com

562.207.1610

<http://www.ntrustinfotech.com>

NTrust, a global provider of lease administration solutions and back office services, is a proven partner to provide speed and accuracy in lease data activities.

ENTERPRISE BUILDING TECHNOLOGY



Open Box Software Process Automation

Brendan Canny, Managing Director, North America
bcanny@openboxsoftware.com
+1 917 677 1460
<http://www.openboxsoftware.com>

We deliver software and services to the Real Estate industry.



Prophia Document Management Enterprise Data | Analytics | AI | ML

Kala Halbert, Director of Marketing
kala@prophia.com
8002733283
<https://www.prophia.com/>

Prophia's AI powered lease abstraction delivers real-time insights for CRE, improving portfolio management, enhancing data accuracy, and reducing operational risk



PredictAP, Inc. Payables | Receivables Process Automation

Stephen Farrell, VP of Sales
sfarrell@predictap.com
5613440818
<http://www.predictap.com/>

PredictAP is an AI-powered invoice capture solution built for real estate AP. It saves time by eliminating manual data entry from invoice ingestion and coding.



PRODA Investment Management and Reporting Property Accounting | Management

Zach Toubman, Mr
ztoubman@proda.ai
+44 (0) 203 740 3766
<http://proda.ai/>

PRODA automatically converts any rent roll data (Excel, PDFs, Yardi, MRI...) into the format you need. Used by Blackstone, Hines, Starwood, and 150+ other companies.



Proxet Enterprise Data | Analytics | AI | ML

Gabriel Safar, Head of Real Estate Solutions
gabriel.safar@proxet.com
857-437-5450
<http://www.proxet.com/>

Proxet is a full-service data, AI, and custom software development firm serving clients looking to apply cutting-edge technology to the built world.



RealPage, Inc. Property Accounting | Management

John Orrico, Vice President
John.Orrico@RealPage.com
(972) 820-3652
<https://www.realpage.com/investment-management>

RealPage is a leading global provider of software and data analytics to the real estate industry.



REALTY|share Document Management

Kevin Abel, Co-Founder
kabel@realtyshare.net
<http://realtyshare.net/realcomm/>

REALTY|share, a SharePoint solution that allows real estate owners and property managers to efficiently store and access property-centric documents in property sites.

ENTERPRISE BUILDING TECHNOLOGY



REdirect
Budgeting & Forecasting
Document Management

Lauren Wetzel, Principal
lwetzel@redirectinc.com
212.220.8601
<http://www.REdirectConsulting.com>

A provider of consulting solutions including systems selection, implementation, customization, conversion and support for leading applications including MRI and Yardi.



TermSheet
Debt | Treasury

Chen Ben-Eliah, VP, Business Development
chenb@sepiocyber.com
+1 240-660-8690
<https://sepiocyber.com/>

TermSheet's powerful productivity tools help real estate teams execute deals more efficiently through seamless collaboration, streamlined workflows.



REstack
ERP
Investment Management and Reporting

Robert Lieberman, President
rlieberman@restack.com
917-545-4889
<http://www.restack.com>

Providing Expert Advice and Support on Strategic, Management and Technology Challenges for Real Estate Investors, Owners, and Operators.



Tridium
Cloud Services

Therese Sullivan, Customer Marketing Leader
Therese.sullivan@tridium.com
804-762-3121
<http://www.tridium.com>

Tridium is a global leader in business application frameworks that have fundamentally changed the way devices and systems connect.



Sepio
Cybersecurity (IT)
Risk Management

Chen Ben-Eliah, VP, Business Development
chenb@sepiocyber.com
+1 240-660-8690
<https://sepiocyber.com/>

Sepio trafficless solution provides the ultimate visibility to any connected HW asset - protecting against data breaches and making sure your CMDB is UpToDate.



YAVICA
ERP

Mads Sørensen, CEO
sales@yavica.com
+45 22 88 00 00
<http://www.yavica.com/>

YAVICA offers global real estate management for commercial and residential properties via Microsoft Dynamics 365, ensuring complete lifecycle control.



SMART BUILDINGS START WITH **smarter networks.**

Future-ready connectivity isn't just a tenant perk—it's a property differentiator. With scalable Wi-Fi, private networks, and DAS, you can modernize your portfolio without upfront capital. Flexible financial models. Long-term value. No compromise.

Whether you manage a single asset or a national portfolio, our networks scale with your vision. From Class A towers to mixed-use developments, we deliver the connectivity foundation that keeps your properties future-ready.

LEARN MORE AT [BOLDYN.COM](https://boldyn.com) 

REAL ESTATE SERVICES & SOLUTIONS



BearCom IT Management & Services

Viren Parikh, Director of Business Development

viren.parikh@bearcom.com

(972) 795-4480

<https://bearcom.com/>

BearCom delivers a powerful, future-proof alternative to traditional DAS with Ericsson's advanced Radio Dot System—an innovative, high-efficiency solution.



CohnReznick Consulting/Implementation/Advisory

Paul Ricci, Partner, Enterprise Applications Leader

paul.ricci@cohnreznick.com

732-266-6433

<https://www.cohnreznick.com/>

CohnReznick helps organizations optimize performance, manage risk, and maximize value through associated firms operating under the CohnReznick brand.



Power Design Construction

<https://www.powerdesigninc.us/>

Power Design is a leading design build contractor working with developers and builders on complex projects, delivering services across multiple trades.

REAL ESTATE SERVICES & SOLUTIONS



QUANTRA
TECH

Quantra Technology Solutions
Investment Management and Reporting
Payables | Receivables
Property Accounting | Management

Ganesh Kanagaraj | Founder and CEO |
ganesh@quantratech.com
3473950369
<https://quantratech.com/>

Quantra integrates tech and financial data to boost business success, streamlining IT and data management to save time, cut costs, and enhance competitiveness.



RealFoundations
Process Automation
Property Accounting | Management

Savannah Goldenberg, Presence Manager
savannah.baron@realfoundations.net
9492514145
<http://www.realfoundations.net>

RealFoundations is a global professional services firm focused on helping real estate companies in all market sectors make smarter, more profitable decisions.

REAL ESTATE SERVICES & SOLUTIONS



Alpha Alternatives (formerly Lionpoint Group) **Consulting/Implementation/Advisory**

Julie Miner, Senior Partner
jminer@lionpointgroup.com
<https://alternatives.alphafmc.com/>

Alpha Alternatives is a global advisory firm with a unique focus on the alternative investments industry.



Atlas Global Advisors **Consulting/Implementation/Advisory**

Anthony Nazzaro, Executive Managing Director
anazzaro@atlasglobaladvisors.com
908.531.7053
<https://www.atlasglobaladvisors.com/>

Atlas Global Advisor's mission is to build business value by increasing revenue, decreasing expenses, managing risk and enhancing culture for our clients.



Altus Group

Altus Group **Valuations**

Aviva Fink, Vice President, Global Marketing
contact-us@altusgroup.com
713-621-4343
<https://www.altusgroup.com/>

Leading-edge technology, advanced analytics and deep industry expertise: the on-demand asset, portfolio and fund intelligence you require to maximize outcomes.



Deloitte **Consulting/Implementation/Advisory**

<https://www2.deloitte.com/>

Deloitte drives progress. Our firms around the world help clients become leaders wherever they choose to compete.



EY **Consulting/Implementation/Advisory**

<https://www.ey.com/>

EY is a global leader in assurance, tax, transaction and advisory services.

REAL ESTATE SERVICES & SOLUTIONS



Five Rivers IT, Inc. **IT Management & Services**

Sarabjit Singh, CEO
Sarab@fiveriversit.com
6465566571
<http://www.fiveriversit.com>

Compliance & Security focused IT Solutions company providing REIT's with business-focused IT services to optimize operations, manage risk & deliver measurable value



Group9 Communications **IT Management & Services**

Paulina Roberts, VP of Business Development
proberts@group9com.com
6784038863
<https://www.group9com.com/>

We help companies find the right technology solutions to meet their business objectives while providing significant savings and support.



JLL **Consulting/Implementation/Advisory**

Nicole Briggs, VP, Marketing Director
JLLTechSolutions@am.jll.com
214 777 5139
<http://www.us.jll.com/united-states/en-us/technology-solutions/>

JLL is a leading professional services firm that specializes in real estate and investment management.

Michael Baker

I N T E R N A T I O N A L

Michael Baker International **Architectural**

Fred Gordy, National Practice Lead - Building Cybersecurity
fred.gordy@mbakerintl.com
404-906-3004
<http://www.mbakerintl.com/>

Michael Baker International is a leading provider of engineering and consulting services with more than 80 years of legacy of expertise, experience, and innovation.



Newcomb & Boyd **Consulting/Implementation/Advisory**

<http://www.newcomb-boyd.com/>

Engineers solve things. It's what we do. In fact, at Newcomb & Boyd, we believe our purpose is to provide engineering solutions to shape the world.



Proxet **IT Management & Services**

<http://www.newcomb-boyd.com/>

Proxet is a full-service data, AI, and custom software development firm serving clients looking to apply cutting-edge technology to the built world.

REAL ESTATE SERVICES & SOLUTIONS



REdirect

Consulting/Implementation/Advisory

Lauren Wetzel, Principal

lwetzel@redirectinc.com

212.220.8601

<http://www.REdirectConsulting.com>

A provider of consulting solutions including systems selection, implementation, customization, conversion and support for leading applications including MRI and Yardi.



REstack

Consulting/Implementation/Advisory

Robert Lieberman, President

rlieberman@restack.com

917-545-4889

<http://www.restack.com>

Providing Expert Advice and Support on Strategic, Management and Technology Challenges for Real Estate Investors, Owners, and Operators.



Relay Human Cloud

Talent Recruitment

Michael Pariza, President

michael@relayhumancloud.com

214-217-9926

<https://www.relayhumancloud.com/>

Relay uses technology to provide staff augmentation, giving companies access to global talent and new markets while creating positive impact for your business.



VTS

Leasing

<https://www.vts.com/>

VTS centralizes all of your critical data and workflows, empowering you to attract, convert and retain your most valuable assets – tenants.

MAKING REAL ESTATE RUN BETTER TODAY, TOMORROW, AND BEYOND.



Since 2000, RealFoundations' proven frameworks and cutting-edge innovation have guided the real estate industry—paving the way for the next era of success.

With over 400 employees thriving, 500 clients empowered, and more than 2,700 projects successfully delivered—we're just getting started.

For 25 years, we have been helping real estate run better by driving efficiency, growth, and lasting impact. Partner with the unmatched expertise of RealFoundations to shape the future of your business.



real**foundations**
Making Real Estate Run Better

SMART BUILDINGS AND OPERATIONS



Airtower Networks

5G | CBRS | DAS | In Building Wireless

Brandon Harris, Account Director

bharris@airtower.com

203-675-7331

<http://airtower.com>

Airtower Networks offers custom-designed 5G Cellular, Public Safety, & Private LTE networks for commercial facilities & Smart Buildings as a subscription service.



BearCom

5G | CBRS | DAS | In Building Wireless

Fire, Life, Safety

IoT (including sensors, meters etc.)

System Integration

Wired and Wireless Building Networks

Viren Parikh, Director of Business Development

viren.parikh@bearcom.com

(972) 795-4480

<https://bearcom.com/>

BearCom delivers a powerful, future-proof alternative to traditional DAS with Ericsson's advanced Radio Dot System—an innovative, high-efficiency solution.



CBRE

Digital Twins | BIM

Nick Holzworth, Managing Director | Portfolio Technology

nick.holzworth@cbre.com

415.265.2736

<https://www.cbre.com/>

CBRE's Portfolio Technology group helps our clients select, implement & support the right suite of technologies to support their evolving workplaces & portfolios.

SMART BUILDINGS AND OPERATIONS



Intelligent Buildings
BAS

Tom Shircliff, Principal
tom@intelligentbuildings.com
704-759-2710
<http://www.intelligentbuildings.com>

IntelligentBuildings® offers portfolio-wide cybersecurity site assessments and services. Since 2004, we are the most trusted and experienced name in Smart Buildings.



Lynxspring
BAS

Marc Petock, Chief Marketing & Communications Officer
marc.petock@lynxspring.com
816-347-3500
<http://www.lynxspring.com>

Lynxspring develops, manufactures and distributes edge-to-enterprise solutions for smart buildings. The company's solutions are deployed in thousands of buildings.



Quantra Technology Solutions
System Integration

Ganesh Kanagaraj|Founder and CEO|
ganesh@quantratech.com
3473950369
<https://quantratech.com/>

Quantra integrates tech and financial data to boost business success, streamlining IT and data management to save time, cut costs, and enhance competitiveness.

SMART BUILDINGS AND OPERATIONS



Wesco

BAS

Digital Twins | BIM

IoT (including sensors, meters etc.)

Network

OT and Telemetry Data | Analytics | AI | ML

Physical Security

Brad Stevens, Vice President of IoT and Platform Sales

brad.stevens@wescodist.com

412-454-2200

<https://www.wesco.com/entrocim>

Our mission is to build, connect, power and protect the world. We meet your business challenges with innovation and solutions that keep our world running smoothly.



Aditum Connect Inc.

Network

Brian Higgins, Founder & CEO

brian@aditumconnect.com

2038428520

<http://www.aditumconnect.com>

Aditum is designed to bring internet service into Multi-Tenant Buildings, and cater to the needs of owners, while creating and driving new revenue to the property.



Airwavz Solutions

5G | CBRS | DAS | In Building Wireless

Ron Proleika, VP Marketing

ron.proleika@airwavz.com

1-833-AIRWAVZ

<http://www.airwavz.com>

Airwavz provides innovative in-building wireless solutions for commercial buildings, ensuring exceptional cellular service for all who work at or visit your property



Andorix Inc.

IoT (including sensors, meters etc.)

Aleshia Ing

andxmarketing@andorix.com

<https://www.andorix.com/>

Andorix is a smart building enabler and systems integrator for real estate properties. We provide the digital infrastructure to optimize building operations.



Apex Tigre

Digital Twins | BIM

Rohan Bulchandani, Founder

marketing@retransform.com

214.358.4330

<https://www.apexgroup.com/technology-platforms/apex-tigre/>

Apex Tigre delivers proptech solutions, digital platforms, and managed services tailored to commercial, retail, residential, and corporate real estate.

SMART BUILDINGS AND OPERATIONS



Archidata
Digital Twins | BIM
Facilities Management

Louise Morgan, EVP and Partner

lmorgan@archidata.com

212-634-6408

<https://www.archidata.com/en/index.html>

Archidata is the most innovative software for the on-going management of data, drawings and digital twins.



Boldyn Networks
5G | CBRS | DAS | In Building Wireless
IoT (including sensors, meters etc.)
Wired and Wireless Building Networks

Monnie Johnson, SVP, Wireless Solutions

monnie.johnson@boldyn.com

949-515-1500

<https://www.boldyn.com/us>

Boldyn Networks is one of the world's largest neutral host providers, delivering the advanced shared network infrastructures needed for a smart & sustainable future.



Bueno
FDD

hello@buenosystems.com.au

<http://www.buenosystems.com.au/>

Bueno helps teams harness the power of Smart Building Analytics to realize a more sustainable future by centralizing building management at scale.



Cisco Systems
Network

<https://www.cisco.com/>

Cisco (NASDAQ: CSCO) is the worldwide technology leader that securely connects everything to make anything possible.



CLOCKWORKS
ANALYTICS

Clockworks Analytics
FDD

Michael Ferrigno, Marketing

mferrigno@clockworksanalytics.com

(857) 259-4078

<https://clockworksanalytics.com>

Clockworks' building analytics platform continuously monitors HVAC performance, identifying top opportunities to reduce costs + improve energy, maintenance, and IA.



Cochrane Supply
BAS

<https://www.cochranesupply.com/>

Cochrane Supply & Engineering is a leading Industrial IoT & Building Controls supplier representing 50+ manufacturers including Honeywell, Johnson Controls, Tridium.

Integration

Equipment Control

Data Management



LYNXSPRING®

Interoperability

Open Solutions

Universal Control

One Platform. Many Possibilities.

1 (877) 649-5969

www.lynxspring.com

www.lynxspring.com/contact-us

SMART BUILDINGS AND OPERATIONS



Communication Technology Services (CTS)
5G | CBRS | DAS | In Building Wireless

Susanne Hale, Director, Marketing

shale@cts1.com

7039270863

<http://www.cts1.com/>

CTS provides in-building and campus connectivity solutions for enterprises and mobile network operators, solving and managing the most complex networking challenges.



Digitectura Technologies Private Limited
Energy (general)

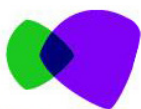
Bimal Desai, Co-Founder

bimal@grydsense.com

9845033816

<https://www.grydsense.com/>

The GrydSense suite of IoT products delivers value to both SMART buildings and SMART cities.



CONNECTED SENSORS
Water Management Solutions

Connected Sensors
IoT (including sensors, meters etc.)

Simon Brunet, Founder & President

simon.brunet@connectedsensors.ca

4164538938

<http://connectedsensors.com>

Developer of green technology and leader in the water monitoring and conservation space, Connected Sensors is an unrivalled trailblazer in sustainable technology.



Distech Controls
BAS

<http://www.distech-controls.com>

Distech Controls provides unique building management technologies and services that optimize energy efficiency and comfort in buildings.



Delta Electronics
Energy (general)

ib.sales.us@deltawww.com

<http://www.delta-americas.com/en-US/index>

Delta Electronics is a global leader in power management & energy efficiency solutions, driving innovation and sustainability for industries to optimize performance.



EnOcean
IoT (including sensors, meters etc.)

<https://www.enocean.com/en/>

EnOcean - self-powered Internet of Things EnOcean GmbH is the developer of the patented energy harvesting wireless technology marketed under the Dolphin brand.

SMART BUILDINGS AND OPERATIONS



FLASH

Smart Parking

Jeff Johnson, VP of Enterprise Sales

Jeff.Johnson@flashparking.com

773-490-5809

<https://www.flashparking.com/>

FlashParking is powering the transformation of isolated parking assets into connected mobility hubs with FlashOS, the first Mobility Hub Operating System.



Georgia-Pacific

Georgia-Pacific

Environmental Sustainability

Facilities Management

IoT (including sensors, meters etc.)

Maintenance

Rex Moon, Sr. Director Sales, Connected Solutions

rexford.moon@gapac.com

7573900611

<https://www.gppro.com>

Georgia-Pacific is an American pulp and paper company, and is one of the world's largest manufacturers and distributors of tissue, paper, toilet and paper towel.



Group9 Communications Network

Paulina Roberts, VP of Business Development

proberts@group9com.com

6784038863

<https://www.group9com.com/>

We help companies find the right technology solutions to meet their business objectives while providing significant savings and support.



HALO Networks

5G | CBRS | DAS | In Building Wireless

Tom Gotuzzo, SVP National Accounts

Tom.Gotuzzo@HALONetworks.com

425-442-1630

<http://www.halonetworks.com>

HALO Networks is the industry leader in 5G DAS deployment, wireless infrastructure and next generation in-building and outdoor mobile wireless networks.



Honeywell

BAS

<https://www.honeywell.com/us/en>

At Honeywell, we're transforming the way the world works, solving your business's toughest challenges. Learn how we can drive your sustainability.



Intelligent Riser

Wired and Wireless Building Networks

Greg Jones, President

gjones@montgomerytech.net

844.824.0100

<http://www.riser.com>

The manager for some of the nation's premier office building owners. We work with landlords nationally to ensure that building technology meets their current needs.

SMART BUILDINGS AND OPERATIONS



Mecho **BAS**

David Robinson, Director of Automation

david.robinson@mechoshade.com

347.598.0138

<https://www.mechoshade.com/>

Mecho, founded in 1969, leads in innovative window coverings. We offer high-quality solar protection and sustainable, tailored shading solutions for diverse needs.



MHT Technologies **Lighting**

Akram Khalis, CEO

ak@mht-technologies.com

(718) 524-4370

<https://mht-technologies.com/>

MHT Technologies is known for its flagship product, Inspextor offers businesses seamless integration, scalability, and enhanced energy efficiencies.



Milesight **IoT (including sensors, meters etc.)**

iot.sales@milesight.com

86-592-5085280

<http://www.milesight.com/>

Milesight is a leading provider of innovative IoT and security products.



Molex **Wired and Wireless Building Networks**

<https://www.molex.com/en-us/home>

Molex is a global electronics leader committed to making the world a better, more-connected place.



Monnit Corporation **IoT (including sensors, meters etc.)**

Nick Mecham, VP, Business Development

nickm@monnit.com

8015615555

<https://www.monnit.com/>

Monnit bridges the gap between industry & technology through the IoT, by empowering businesses with low-cost, simple sensor solutions to monitor anything.



Nantum AI **Energy (general)** **HVAC** **Sustainability | Carbon Accounting | Renewables**

Lauren Long, VP, Brand & Marketing

llong@prescriptivedata.io

212-284-8404

<http://www.nantum.ai>

Nantum AI is an award-winning, integrated energy platform that empowers buildings with actionable building insights, intelligent recommendations and automation.

SMART BUILDINGS AND OPERATIONS



Neeve

Cybersecurity (OT)

IoT (including sensors, meters etc.)

OT and Telemetry Data | Analytics | AI | ML

Charles Stucki, Head of Marketing

charles@neeeve.ai

+19492755397

<http://www.neeeve.ai>

Neeve is a smarter technology foundation for intelligent buildings, deployed by leading companies around the world.



Proxet

OT and Telemetry Data | Analytics | AI | ML

Gabriel Safar, Head of Real Estate Solutions

gabriel.safar@proxet.com

857-437-5450

<http://www.proxet.com/>

Proxet is a full-service data, AI, and custom software development firm serving clients looking to apply cutting-edge technology to the built world.



Nokia

5G | CBRS | DAS | In Building Wireless

Network

Wired and Wireless Building Networks

Rich Hofstra

rich.hofstra@nokia.com

<https://www.nokia.com/>

At Nokia, we create technology that helps the world act together.



Realcomm

5G | CBRS | DAS | In Building Wireless

Waste

Water

Lisa Woods, VP, Strategy & Business Development

lwoods@realcomm.com

919.285.2368

<https://www.realcomm.com>

Realcomm is a worldwide research and event company at the intersection of commercial real estate, corporate real estate, automation, and technology.



Panduit

Network

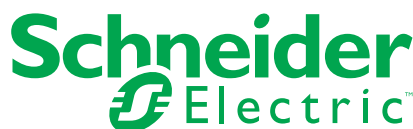
Darryl Benson, Solutions Development Manager

dsb@panduit.com

708.532.1800

<http://www.panduit.com/Solutions/ConnectedBuildings/index.htm>

Panduit provides structured cabling solutions for commercial properties.



Schneider Electric

Energy (general)

Allison Huffman, Strategic Marketing Director

allison.huffman@se.com

978.494.7218

<http://www.se.com>

Schneider's purpose is to empower all to make the most of our energy and resources, bridging progress and sustainability for all, we call this Life Is On.

SMART BUILDINGS AND OPERATIONS



Sepio Cybersecurity (OT)

Chen Ben-Eliyahu, VP, Business Development

chenb@sepiocyber.com

+1 240-660-8690

<https://sepiocyber.com/>

Sepio trafficless solution provides the ultimate visibility to any connected HW asset - protecting against data breaches and making sure your CMDB is UpToDate.



SkyFoundry BAS

John Petze, Partner

john@skyfoundry.com

804-545-3116

<http://www.skyfoundry.com>

SkyFoundry's SkySpark analytics platform automatically analyzes building, energy and equipment data to identify issues, and opportunities for improved performance.



Siemens BAS

Dennis Thompson, Director, Business Development

dennis.thompson@siemens.com

510-589-0054

<http://www.siemens.com>

Since 1847 Siemens has empowered customers to transform their businesses, so that they can impact the world.



Sinclair Digital Digital Twins | BIM

Matt Conger

matt@sinclair-digital.com

8172554015

<https://sinclair-digital.com/>

We are a design and implementation firm pioneering sustainable and intelligent buildings with a primary focus on DC Power and Microgrids, Building Controls and more.



Strato Automation BAS

Kelle Donohue, VP Global Sales & Marketing

k.donohue@stratoautomation.com

239.888.5122

<https://stratoautomation.com/>

Strato Automation delivers building automation solutions, supporting BACnet protocol, offering open data access, and easy-to-use hardware and software.



The Building People Facilities Management

<https://thebuildingpeople.com/>

The Building People integrate technology, buildings, and people to deliver the future of the built environment, today.

SMART BUILDINGS AND OPERATIONS



Tosibox
BAS
Cybersecurity (OT)
Network

Tanner Tasker, Senior National Sales Manager

tanner.tasker@tosibox.com

972-600-8660

<https://www.tosibox.com/>

Tosibox - Safeguarding Critical OT Environments with a Purpose-Built Cybersecurity Platform.



Tridium
BAS

Therese Sullivan, Customer Marketing Leader

Therese.sullivan@tridium.com

804-762-3121

<http://www.tridium.com>

Tridium is a global leader in business application frameworks that have fundamentally changed the way devices and systems connect.



Visitt
Facilities Management
Work Orders

Roei Friedberg, VP Sales and Partnerships

roei.friedberg@visitt.io

302-397-4703

<https://visitt.io/>

AI-Driven Building Operations Platform that empowers property teams by centralizing all CRE operations in one place.



wtec, Inc.
IAQ
IoT (including sensors, meters etc.)
Lighting

Tim Miscovich, CCO

sales@wtec.io

(408) 824-9949

<https://wtec.io/>

smartengine provides the intelligent infrastructure for your building to be smart and sustainable.

BEARCOM[®]

SMART BUILDINGS START WITH RELIABLE WIRELESS.



BEARCOM

40+
YEARS
NATIONWIDE
SYSTEMS
INTEGRATION

ERICSSON

145+
YEARS
GLOBAL
TELECOMMUNICATIONS
EXPERTISE

WITH BEARCOM'S NEUTRAL HOST SOLUTION, YOU CAN:



ENSURE COMPLIANCE

with public safety mandates like
FirstNet, NFPA, and IFC codes



FUTURE-PROOF YOUR PROPERTY

with scalable infrastructure built for
5G and beyond



ELIMINATE DEAD ZONES

and improve mobile performance for
every major carrier



ENHANCE LEASING VALUE

by positioning your building as a
connected, tech-forward space

NOT YOUR TRADITIONAL DAS.

BearCom leverages Ericsson's **RADIO DOT SYSTEM** to deliver reliable, carrier-grade, and future-proof in-building neutral host cellular solutions tailored to meet the needs of your building and tenants. Together, we offer a unique alternative to traditional DAS implementations.

Contact us today to start the conversation.

CONTACT US:



(972) 795-4480



NetworkSolutions@BearCom.com



80+ Locations Across North America



www.BearCom.com

BEARCOM

ALWAYS ON

ERICSSON

WORKPLACE STRATEGY & DESIGN

CBRE

CBRE

Corporate Real Estate Data/Analytics/AI/ML

IWMS

Portfolio Optimization

Workplace Design | Strategy

Nick Holzworth, Managing Director | Portfolio Technology

nick.holzworth@cbre.com

<https://www.cbre.com/>

CBRE's Portfolio Technology group helps our clients select, implement & support the right suite of technologies to support their evolving workplaces & portfolios.



CohnReznick

Corporate Real Estate Data/Analytics/AI/ML

Paul Ricci, Partner, Enterprise Applications Leader

paul.ricci@cohnreznick.com

732-266-6433

<https://www.cohnreznick.com/>

CohnReznick helps organizations optimize performance, manage risk, and maximize value through associated firms operating under the CohnReznick brand.

DEALPATH

Dealpath

Portfolio Optimization

Shazia Razzaq, Marketing Specialist

shazia.razzaq@dealpath.com

<http://www.dealpath.com>

Dealpath is the leading cloud-based deal management platform for institutional real estate investment acquisitions, development projects, and financing deals.

Elevated®

Elevated

Workplace Design | Strategy

Cheyo Rogers, Co-CEO

crogers@lightningenvironments.com

6464622480

<https://www.poweredbyelevated.com/>

Cutting-edge smart building software offering an innovative solution that enhances efficiency, sustainability, and the user experience.



QUANTRA
TECH

Quantra Technology Solutions

Corporate Real Estate Data/Analytics/AI/ML

Ganesh Kanagaraj | Founder and CEO |

ganesh@quantratech.com

3473950369

<https://quantratech.com/>

Quantra integrates tech and financial data to boost business success, streamlining IT and data management to save time, cut costs, and enhance competitiveness.



RealFoundations

Corporate Real Estate Data/Analytics/AI/ML

Savannah Goldenberg, Presence Manager

savannah.baron@realfoundations.net

9492514145

<http://www.realfoundations.net>

RealFoundations is a global professional services firm focused on helping real estate companies in all market sectors make smarter, more profitable decisions.



Turn big data into better action



Questions become insights **80% faster** with
AI-powered property management software

Connect your
operations

Configure your
experience

Control your
outcomes

Take a Look

WORKPLACE STRATEGY & DESIGN



Altus Group

Altus Group

Corporate Real Estate Data/Analytics/AI/ML

Aviva Fink, Vice President, Global Marketing

contact-us@altusgroup.com

713-621-4343

<https://www.altusgroup.com/>

Leading-edge technology, advanced analytics and deep industry expertise: the on-demand asset, portfolio and fund intelligence you require to maximize outcomes.



Apex Tigre

Corporate Real Estate Data/Analytics/AI/ML

Rohan Bulchandani, Founder

marketing@retransform.com

214.358.4330

<https://www.apexgroup.com/technology-platforms/apex-tigre/>

Apex Tigre delivers proptech solutions, digital platforms, and managed services tailored to commercial, retail, residential, and corporate real estate.

butlr

Butlr

Occupancy | Utilization

<https://www.butlr.com/>

Butlr the Leading AI Data Platform for Anonymous People Sensing.



Cove

Experience Platforms

<https://www.cove.is/>

Cove, we are on a mission to reimagine real estate through powerful technology and seamless experiences.



essensys

Flexible Space Management

Occupancy | Utilization

Portfolio Optimization

Connor Shugrue, Digital Marketing Manager

connor.shugrue@essensys.tech

203.231.8725

<http://essensys.tech/>

essensys provides software & integrated hardware to help leading real estate providers deliver flexible, connected, and digitally-enabled spaces in a hybrid world.



GlobalDWS

Collaboration Technologies

Rami Wehbe, Co-Founder & CTO

rami.wehbe@globaldws.com

+1 416-551-5479

<http://www.globaldws.com/>

GlobalDWS is an international systems integrator and a trailblazer when it comes to cognitive automation, service robots and AI. We enable the future of work.



HqO

Experience Platforms

Courtney Hayes, Marketing Manager

courtney.hayes@hqo.co

978.407.3545

<https://www.hqo.com/>

HqO is the industry's fastest growing tenant experience technology. We tackle the hardest challenges in commercial real estate and support your entire portfolio.

WORKPLACE STRATEGY & DESIGN



Juniper Square Portfolio Optimization

Brandon Sedloff, Managing Director

brandon@junipersquare.com

415-841-2722

<http://junipersquare.com>

Juniper Square is transforming the private funds industry with easy-to-use software that streamlines fundraising, investment administration, and investor reporting.



KODE Labs Portfolio Optimization

Ben Dwyer, SVP of Global Sales

bendwyer@kodelabs.com

<https://kodelabs.com/>

KODE Labs transforms the built environment through KODE OS, an open enterprise platform that seamlessly integrates building management, IoT, and operational systems.



NavigatorCRE Corporate Real Estate Data/Analytics/AI/ML

Rachel Martin, Director, Events and Marketing

rachel@navigatorcre.com

<https://www.navigatorcre.com/>

NavigatorCRE simplifies data management and visualization with a patented cloud Data Warehouse that ingests data from nearly any source, structured or unstructured.



Planon Corporate Real Estate Data/Analytics/AI/ML IWMS Occupancy | Utilization

Pauline Perenack, Marketing Director

pauline.perenack@planonsoftware.com

781.356.0999

<https://planonsoftware.com/us/>

Planon, a provider of Integrated Workplace Management Solutions (IWMS), enables customers to centralize and automate real estate & facilities management operations.



PremiseHQ Corporate Real Estate Data/Analytics/AI/ML

<https://premisesaas.com/>

PremiseHQ SaaS automates complex data management across commercial and industrial properties to help their clients reduce operational costs, increase capitalization.



PRODA Corporate Real Estate Data/Analytics/AI/ML Portfolio Optimization

Zach Toubman, Mr

ztoubman@proda.ai

+44 (0) 203 740 3766

<http://proda.ai/>

PRODA automatically converts any rent roll data (Excel, PDFs, Yardi, MRI...) into the format you need. Used by Blackstone, Hines, Starwood, and 150+ other companies.



Check-in times
with additional
location notes



Precise location
data and live
tracking only when
an alert is activated



Management and
usage reports



Professional
monitoring 24/7 by
our local facility



Multiple alert methods;
missed check-in,
in-app button, shake
and voice command



Bluetooth duress
button for discreet
safety alert activation

We protect your **lone workers.**

WorkSafe Guardian provides your **lone workers** with easy, smart and efficient **24/7 safety monitoring** from their smartphone, with advanced location tracking, welfare check-in and safety and medical alerts. With updated technology now offering voice command alerts the new WorkSafe Guardian app is the next evolution in lone worker safety. Specialising in Health Care, Real Estate, Aged Care, Government, Education, Manufacturing, Warehouse and Mining.

WORKPLACE STRATEGY & DESIGN



Prophia

Corporate Real Estate Data/Analytics/AI/ML

Kala Halbert, Director of Marketing

kala@prophia.com

8002733283

<https://www.prophia.com/>

Prophia's AI powered lease abstraction delivers real-time insights for CRE, improving portfolio management, enhancing data accuracy, and reducing operational risk.



Visitt

Corporate Real Estate Data/Analytics/AI/ML

Roei Friedberg, VP Sales and Partnerships

roei.friedberg@visitt.io

302-397-4703

<https://visitt.io/>

AI-Driven Building Operations Platform that empowers property teams by centralizing all CRE operations in one place.



R-Zero

Health/Wellness/DEI

<https://rzero.com/>

R-Zero offers smart building technology that delivers real-time insights on optimizing indoor spaces to improve workforce productivity.



WellStat

Health/Wellness/DEI

<https://www.wellstat.io/>

Leading PropTech company revolutionizing energy management and air quality solutions through advanced data analytics, IoT integration, & smart building technologies.



REALTY|share

Corporate Real Estate Data/Analytics/AI/ML

Kevin Abel, Co-Founder

kabel@realtyshare.net

<http://realtyshare.net/realcomm/>

REALTY|share, a SharePoint solution that allows real estate owners and property managers to efficiently store and access property-centric documents in property sites.



ZenSpace

ZenSpace

Flexible Space Management

Ted Simon, Chief Revenue Officer

ted@zenspace.io

+14155721260

<http://www.zenspace.io>

ZenSpace offers on-demand workspaces for business professionals and an opportunity to building owners to unlock revenue from underutilized spaces with our SmartPods.



Venn

Experience Platforms

<https://www.venn.com/>

Secure Remote & Hybrid Work — Venn's Secure Enclave is purpose-built for security and compliance-driven organizations.



Optergy

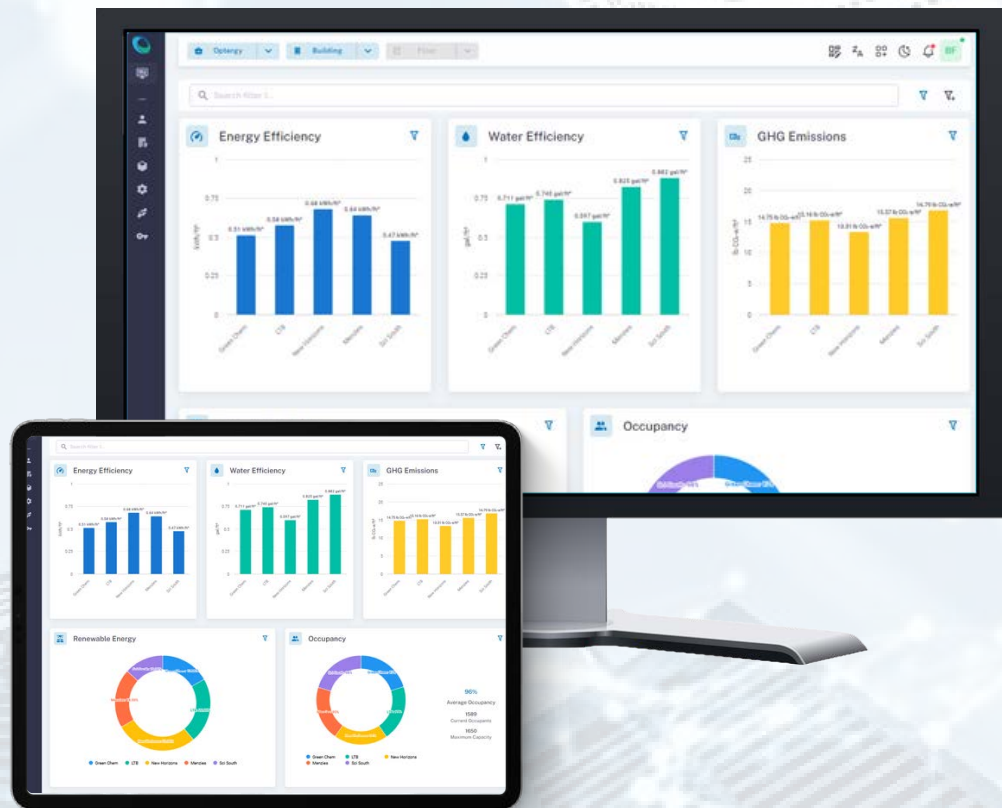
www.optergy.com

info@optergy.com

Silverwater
New South Wales
Australia

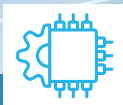
SMART BUILDINGS. SMARTER PORTFOLIOS.

Harness the power of your building's data to reduce emissions, increase tenant comfort and portfolio utilization.



Partnership Approach

Our solutions are deployed in thousands of buildings worldwide, backed by our trusted channel partners.



Hardware & Software

Our controllers, sensors and software make it easy to manage a diverse fleet of assets securely, from anywhere in the world.



Global Reach

Established channel partners in Australia, South East Asia, Europe and North America.



Vendor Agnostic, Open Protocols

Our solutions are designed to work with any BACnet compliant system, and provide exceptional flexibility and scalability for buildings and portfolios.



Secure by Design

Built using modern architectures, our Building and Portfolio solutions are regularly tested by independent bodies.

entroCIM

Unlock the Power of Smart Facility Management

Wesco's entroCIM platform aggregates data from information technologies (IT), operational technologies (OT), sensors, building systems, subsystems and third-party applications – and instantly makes sense of it in one centralized dashboard.

- One login for command and control
- Reduce energy and maintenance costs
- Optimize environmental health and safety
- Improve operational efficiency
- Enhance fault detection and diagnostics (FDD)

Transform your operations with entroCIM.



Trusted by Fortune
100 companies



270 million sq. ft. of
monitored building space



30+ years of
platform innovation



5 million data
records added daily

Request a demo at **Wesco.com/entrocim**