



# Data Infrastructure for Commercial Real Estate

Quickly  
unlock the  
power of your  
data with  
Mapped



**4 hours**

to discover all  
data points in  
a building



**48 hours**

to map 90%  
of the data  
points



**4 days**

to fully onboard  
on-prem and  
cloud data

Bring your ecosystem together with a standardized data layer to gain a critical edge over your competition

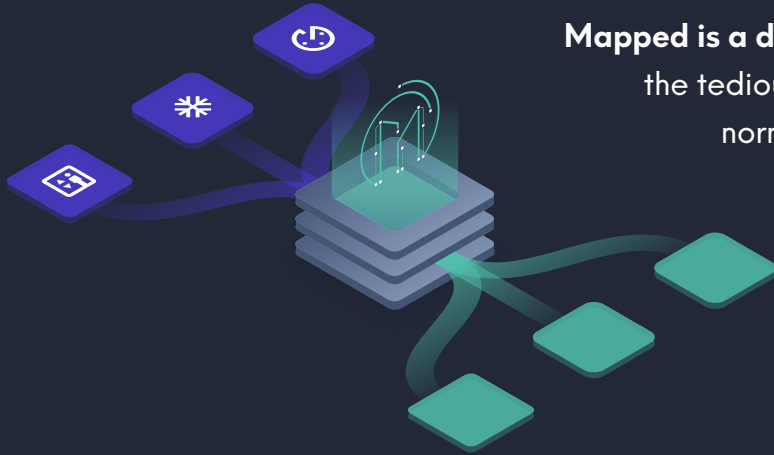
## Current data management efforts are costly and time consuming

Integration of on-prem data sources (such as BAS/BMS, access control, elevators) is unique to each building location and can take a team of 4-5 experts nearly 3-5 months to fully onboard a single building. Now imagine a portfolio of buildings with tenants, service providers, and managers wanting custom access to varying levels of building data. Owners and operators spend \$50k-\$200k in data onboarding and integration efforts per building. These manual efforts are neither scalable nor flexible, often requiring bespoke implementations.

The hurdles grow higher as you look to scale solutions and processes across multiple buildings — often with legacy systems lacking consistent visibility and accuracy. To maintain a competitive edge in today's smart building landscape owners and operators need to create fully integrated systems without sacrificing security and avoiding overly complex data architectures.

## The value of an independent data layer

To connect these discrete systems (which often vary between legacy on-prem networks, cloud systems, WIFI networks, etc.) an independent data layer – a **'Data Infrastructure'** – is needed to eliminate integration complexities, power future applications, and rollout new technologies for built spaces. A data infrastructure platform not only provides a common denominator in data discovery and extraction across various systems, but improves data representation consistency across various devices, versions, and protocols without sacrificing sharing and access security.



**Mapped is a data infrastructure platform** that automates the tedious task of discovering, extracting, and normalizing data from complex building, IT, and cloud systems — drastically improving operational intelligence and unlocking the full value of your data.

## How do you provide a single data layer with all the various protocols, versions, manufacturers, and custom implementations inside a building?

Mapped's standardized data model sets criteria for consistency in how applications interface with underlying devices and systems. With a single API and standard data models underneath, application developers can rapidly integrate and iterate, roll out applications across a portfolio, perform data analytics, and deliver new business outcomes.

Mapped's core platform works across many industries. Any system, device, or sensor is just a connector away. We modeled over 40,000 devices across 900 classes and 100+ cloud connectors spanning a variety of vendors and OEMs in commercial buildings.

## KEY BENEFITS

---

### Quickly Access Fully Connected Data

Begin discovering data within 4 hours, and fully map your building within 4 days. Connect legacy on-prem and cloud systems with ease. Bring all devices, systems, and sensors together to create a single source of truth for property owners, operators, occupants, service providers, and integrators.

---

### Improved Time to Unlocked Data Value

Reduce the time it takes to unlock the value of your data and gather critical operational insights. Whether it's for ESG and Spatial Analytics, or the rollout of predictive analytics and on-demand facility services, unlock the value of your data in record time.

---

### Data & System Security

End-to-end encryption and fine-grain control over what data is shared, managed, and accessed helps to avoid vendor lock-in and secure managed systems for safer, more reliable control.

**Visit our website to learn more and schedule a demo today! [www.mapped.com](http://www.mapped.com)**